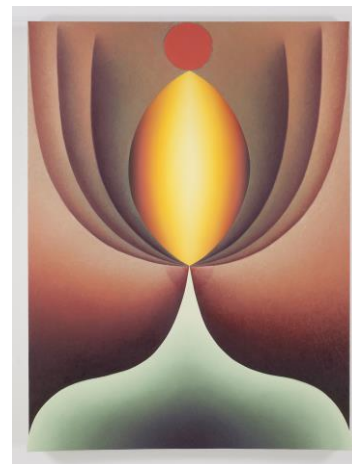


Loie Hollowell

Dominant / Recessive

6 Burlington Gardens, London W1S 3ET
28 August – 20 September 2018

Opening Reception:
Tuesday 4 September, 6–8 PM



London—Pace is delighted to present the gallery's first solo exhibition in the UK by the New York-based artist Loie Hollowell. The exhibition will feature twelve new paintings and twenty-two works on paper which explore themes of sexuality, conception, and being a woman in today's world, through abstractions of the human body and evocations of sacred iconography. The exhibition will be on view at 6 Burlington Gardens from 28 August to 20 September 2018. A catalogue will accompany the exhibition and include an essay by independent Los Angeles-based curator Diana Nawi who will be organising the next Prospect.5, the New Orleans triennial, in 2020.

Reminiscent of luminary painters like Agnes Pelton, Georgia O'Keeffe and Judy Chicago as well as Light and Space artists such as Robert Irwin and James Turrell, Hollowell's geometric ephemeral and meditative new works expand on previous depictions of sexual acts. For the first time, the pieces presented in *Dominant / Recessive* deal with thoughts surrounding conception.

"This new body of work considers the act of trying to conceive as well as conception itself. By layering the concerns of painting on top of hand sculpted bodily surfaces, these shapely forms exist in a space between the illusoriness of painting and dimensionality of sculpture. The more time I spend with these paintings, the more I realise how real, physical and complex this liminal space can become. To put the thoughts I have, about trying to conceive and becoming pregnant into my painting / sculpting language is an invitation to embrace the physicality and otherworldliness of that primal sexual act." - Loie Hollowell, 2018.

Originating in subjective experiences, Hollowell's vibrant works abstract the most intimate and sexually explicit elements of the human anatomy into shapes that reappear frequently throughout art history. For example, Hollowell uses the almond-shaped mandorla, found in medieval religious painting, as an abstract representation of the

vagina. She also uses the lingam, a symbol of divine generative energy worshiped as a symbol of Shiva, as an abstracted representation of the penis.

Before embarking on each of her paintings, Hollowell carefully works with soft pastel on paper to test out various combinations of colour, shading, and forms. She builds upon flat linen-covered panels by applying shapes carved from high-density foam that are then sealed with a mixture of sawdust and acrylic medium. Once these sculpted linen panels have reached a perfectly smooth, undulating surface, Hollowell begins to apply oil paint. Through her experimentation with colour and chiaroscuro, Hollowell creates images that play with ideas of foreground and background, figure and ground, instilling poetry and an ethereal sense of light and volume.

“Following the remarkable presentation of her drawings at Frieze last year, we’re really excited to show Loie’s work at 6 Burlington Gardens. The exhibition will be Loie’s first solo-presentation in London and we’re delighted to introduce her to European audiences. Loie’s curved work show an incredible vibrancy that appeals to a whole new group of collectors and curators.” Said Elliot McDonald, Pace Gallery, Senior Director.

Next February, Hollowell’s work will be included in *Aftereffect: O’Keeffe and Contemporary Painting* at the Museum of Contemporary Art Denver - co-curated by Elissa Auther, Windgate Research Curator, Museum of Arts and Design, New York, and Los Angeles-based painter, Emily Joyce. The artist will also be the subject of a solo-exhibition at Pace, 537 West 24th Street from 3 May to 22 June 2019.

Loie Hollowell (b. 1983, Woodland, California) earned a BA from the University of California, Santa Barbara, and an MFA from Virginia Commonwealth University. Hollowell was the recipient of a 2011 Virginia Museum of Fine Arts Fellowship Award. She lives and works in New York. Hollowell joined Pace in January 2017. Her work has been featured in two exhibitions with the gallery in Hong Kong and Palo Alto.

Pace is a leading contemporary art gallery representing many of the most significant international artists and estates of the twentieth and twenty-first centuries.

Under the leadership of President and CEO Marc Glimcher, Pace is a vital force within the art world and plays a critical role in shaping the history, creation, and engagement with modern and contemporary art. Since its founding by Arne Glimcher in 1960, Pace has developed a distinguished legacy for vibrant and dedicated relationships with renowned artists. As the gallery approaches the start of its seventh decade, Pace’s mission continues to be inspired by our drive to support the world’s most influential and innovative artists and to share their visionary work with people around the world.

Pace advances this mission through its dynamic global programme, comprising ambitious exhibitions, artist projects, public installations, institutional collaborations, and curatorial research and writing. Today, Pace has ten locations worldwide: three galleries in New York; one in London; one in Geneva; one in Palo Alto, California; one in Beijing; two in Hong Kong; and one in Seoul. Pace will open a new flagship gallery in New York, anticipated for completion in autumn 2019. In 2016, Pace joined with Futurecity to launch Future\ Pace—an international cultural partnership innovating multidisciplinary projects for art in the public realm.

Images: Loie Hollowell, *A gentle meeting of tips*, 2018; oil paint, acrylic medium, sawdust, and high-density foam on linen mounted on panel, 36" × 48" × 3-1/2" (91.4 cm × 121.9 cm × 8.9 cm) © Loie Hollowell, Courtesy Pace Gallery

For **press inquiries**, please contact: Nicolas Smirnoff, Pace Gallery, +44 203 206 7613 or nsmirnoff@pacegallery.com

For **sales inquiries**, please contact: Pace Gallery, +44 (0)20 3206 7600 or londoninfo@pacegallery.com

Follow Pace on Instagram ([@pacegallery](https://www.instagram.com/pacegallery)), Facebook ([facebook.com/pacegallery](https://www.facebook.com/pacegallery)), and Twitter ([@pacegallery](https://twitter.com/pacegallery))